



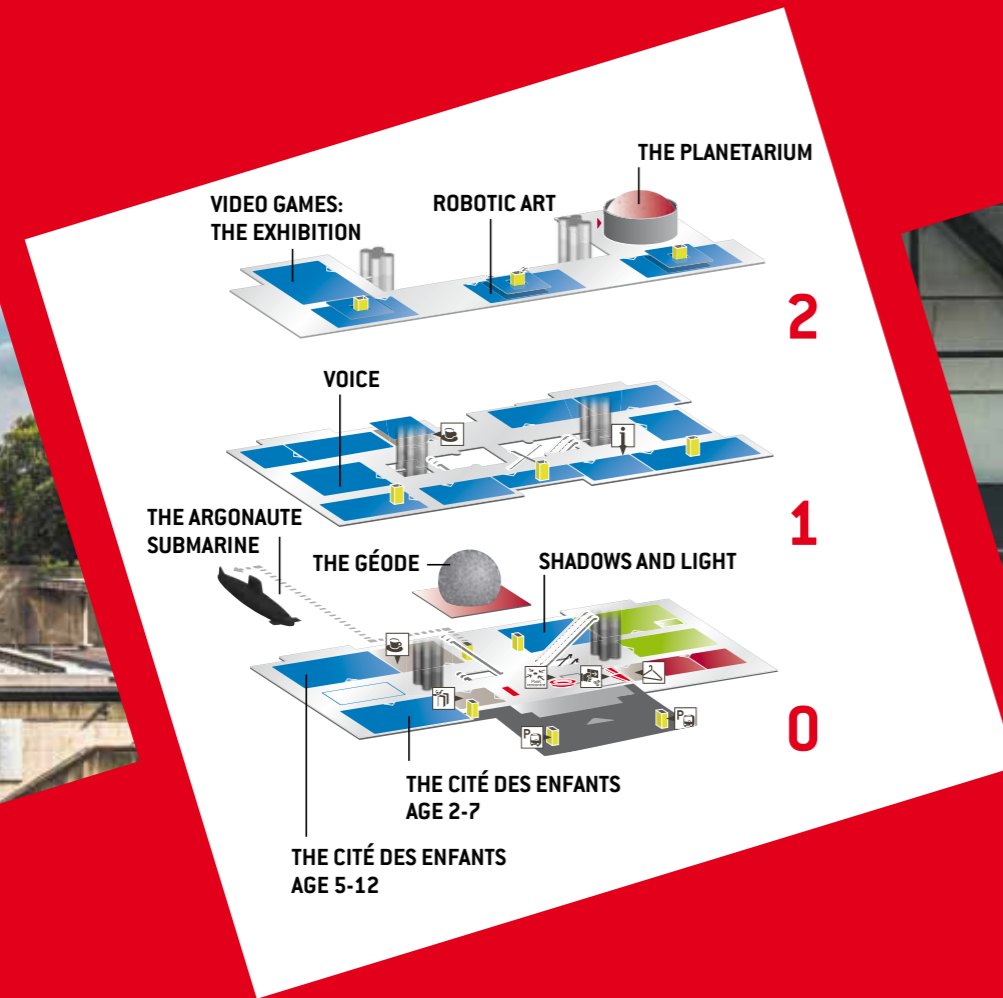
# TWO AMAZING SITES BRIMMING WITH SCIENCE

INTERNATIONAL GROUP SALES BROCHURE 2013/2014



deux lieux **universcience**

# Welcome to the Cité des sciences et de l'industrie



**It's a new season** and we've got brand new exhibitions at the Cité des Sciences! We're bringing together art and science in all their forms with Video Games: The Exhibition and Robotic Art! The latest technical and technological innovations will make your hair stand on end. We're also throwing ourselves into Voice exploration and venturing into the transport of the future. Let the Géode's giant screen take you as far away as the Arctic and Jerusalem, and explore the furthest reaches of the Universe in the Planetarium. We have an entertaining and out-of-this-world programme with something for everyone, whether children, adults, young people or senior citizens. It's our way of encouraging families and school groups to visit us.





# VIDEO GAMES: THE EXHIBITION

22 OCTOBER 2013 TO 24 AUGUST 2014

MUST SEE

> **Come and explore behind the scenes of video games!** This exhibition has created a pixelated world where experts and novices alike come to share new experiences around thirty or so never-before-seen museum displays. Delve into the world of realist or vintage graphics, get to grips with gameplay, test your reflexes or the skills of your avatar, set your player profile and more! Explore arcade games, smartphones, games consoles, computers and more and go behind the screen to discover the production secrets and sociocultural issues surrounding this ubiquitous medium. And if you really want to understand video games, there is just one rule you need to know: you have to start playing now! *Age 9 and over Presented in English and in Spanish.*

*Exhibition produced by the Cité des Sciences et de l'Industrie, with support from the French Ministry for Culture and Communication, the SELL leisure software publishers union and the SNJV French national video games union, in partnership with UBISOFT and M05.com*

**USEFUL INFO:**

Exhibition subject to an additional fee. Booking required. Ticket covers all Explora exhibitions. Open evenings until 9pm during the week in the autumn and Christmas holidays.



## HIGHLIGHTS

- AVATARS • CAR RACE
- GAME ON • WIN YOUR WAY OUT



NEW

## ZONE 3

JANUARY TO NOVEMBER 2014

> **A new area for dialogue,** interaction and experimentation for young people over 15. It's a place for discussion and encounter where freedom and scientific creativity are key. Are you ready for your first science show? *Age 15 and over*

**USEFUL INFO:**

Workshops (in French) available for groups of young people at the same time. Booking required.



# ROBOTIC ART

MUST SEE

8 APRIL 2014 TO 4 JANUARY 2015

> **Watch a DS car transform into** a 18-metre-high totem! This is no science fiction - it's robotic art! An exhibition which strikes a balance between art and technology and presents around a dozen spectacular works that are both enormous and, of course, robotic. Original creatures, a mutant orchestra, robot painter and robot sculptor fill the room. Independent robot artists could be just around the corner!

Age 9 and over *Presented in English and in Spanish.*

*Exhibition produced by Epidemic.*

### USEFUL INFO:

Exhibition subject to an additional fee.

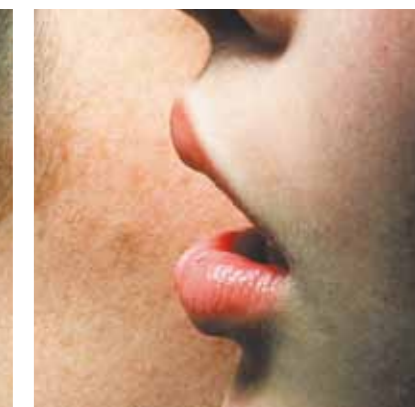
Booking required. Ticket covers all Explora exhibitions (except Video Games: The exhibition).

NEW



## HIGHLIGHTS

- THE TOTEMOBILE • HUMERUS ANIMAL
- THE MUTANT ORCHESTRA • 3D WATER MATRIX



NEW



## VOICE

THE EXHIBITION THAT TELLS ALL

10 DECEMBER 2013 TO 31 AUGUST 2014

> **Our voice is both personal and intimate.** It carries our words and communicates our emotions. It can be harmonious, metallic or hoarse and surprise us with what it is capable of. Discover here the many facets of your voice by taking part in listening games and fun experiments. Test, record and listen to your voice and then modify and play with it and compare it to others. See if you can recognise famous voices from around the world. Shout, sing, speak and whisper... for once. anything goes! *Age 8 and over Presented in English and in Spanish.*

*Exhibition designed by the Cité des Sciences in partnership with IRCAM and INA.*

### USEFUL INFO:

Admission with an Explora ticket.

### HIGHLIGHTS

- TRANSFORMING ONE'S VOICE • PUTTING WORDS OF SOMEBODY'S MOUTH
- SONGS FROM AROUND THE WORLD • QUIZ OF WELL-KNOWN VOICES



### MATHEMATICS

Mathematics may be a fundamental science, but most of all it's fun! Get to know it better through these experiments and activities!

### EARTHWATCH

#### THE SATELLITE REVOLUTION

In our quest to conquer space, mankind has taken beautiful images of the Earth. Find out more about this adventure and about technologies for observing our home planet from space.



### IMAGES

The camera never lies. Get up close and personal with a world of false images.

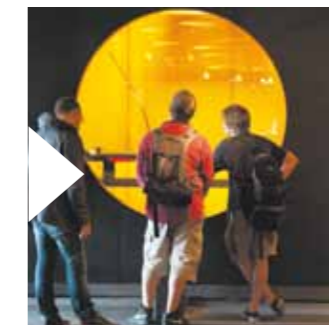
*Closes January 2014*



### TRANSPORT AND MAN

In a world where we are increasingly mobile and are always looking for ways to go further and faster, driving simulators, interactive tables and models help us better understand the challenges around transport that we are currently facing, and could even help us to make more responsible decisions.

**USEFUL INFO:** Most Explora exhibitions are presented in three languages (French, English, Italian or Spanish).



### SOUNDS

Use your ears in this exhibition to understand sound and the physics behind it.



### LIGHT GAMES

The mysteries of light, optical illusions and our perception of colours clearly explained.



### ENERGY

With ever-increasing demand, energy is set to be a big challenge of the future. We have multiple sources, but how can we use both sustainable energy and fossil fuel in a long-term way? Shows, group games and interactive experiments will help you understand.



### THE STORY OF THE UNIVERSE

13.7 billion years ago was the Big Bang. What happened next? A study into the origin of matter and the formation of the Earth.



NOUVEAU

### DESIGN OBSERVER 14

29 NOVEMBER 2013 TO 23 MARCH 2014

We are marking the fifteenth anniversary of the Design Observer competition with the creation of a new prize, and the usual presentation of the most innovative design objects from art and industry. Presented in English.

*In partnership with the French Agency for the Promotion of Industrial Design (APCI).*



# CITÉ DES ENFANTS

> **Look, touch and feel...** A host of fun and educational activities for small children. They get to use their senses, feel their way around and explore their surroundings and even their own body! Dozens of experiments are available for them to perform alone or in groups in 5 different areas: **This is me, I can do it, Finding my way, All together and Trying it out.**

*Presented in English and in Spanish.*



EXHIBITION  
AGE  
2-7



EXHIBITION  
AGE  
5-12



> **Activities such as a giant anthill,** television set and water games give older children the chance to observe and interact with their environment. They can listen to their heartbeat, pretend to be celebrities or even guide a robot through various activities! There are always new things to discover in the different exhibition areas: **The garden, Water games, The TV studio, Communicating, The body and The factory.**

*Presented in English and in Spanish.*

**USEFUL INFO:**

Sessions last 90 minutes (75 minutes during autumn half-term and Christmas holidays). Booking required. Children must be accompanied by an adult.

## HIGHLIGHTS:

- THE CIRCUS • FUN WITH WATER
- THE BUILDING SITE • SEE INSIDE YOUR BODY
- SPEAK WITH YOUR HANDS • PROGRAMME A ROBOT

## SHADOWS AND LIGHT

> **Wander through the home** of the old and eccentric Archibald Ombre where shadows come under the spotlight.

Age 5 and over *Presented in English and in Spanish.*



## ARGONAUTE SUBMARINE

> **The Argonaute submarine** was built in 1957 and served as a formidable spying machine. How did its 40-man crew transform this fighter into a jewel of the French navy?

**USEFUL INFO:**

Admission with a special ticket. Visit with audioguide, available in English, Spanish and Italian version. Age 3 and over

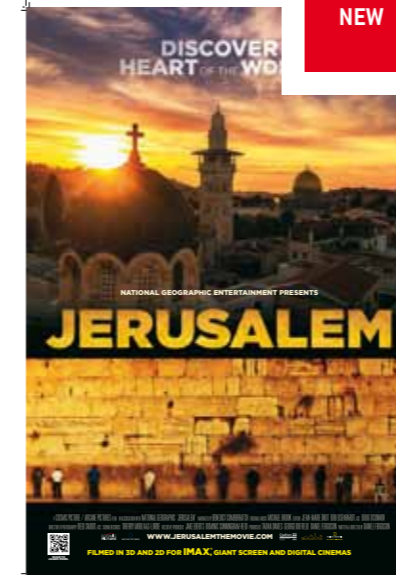




# THE GÉODE

MUST SEE

> **The legendary Géode** needs no introduction and is renowned both for its design and unique programme of IMAX and 3D films. Once again this year it is focussing on nature, exploration, man's adventures in the ocean depths, the North Pole, the heart of the Middle East and Normandy.



NEW

## JERUSALEM

FROM 16 OCTOBER 2013

> **Discover the Holy City** and the surrounding region through breath-taking helicopter images of its landscapes presented in IMAX®, providing a never-before-seen perspective on this age-old city.

**USEFUL INFO:**  
400 seats. Age 3 and over. Reservation required. Not recommended to women 6 months pregnant. Groups should arrive 20 minutes in advance. Headphones for English version of films provided at reception, subject to availability.

## STILL SHOWING

- ARCTIC • BORN TO BE WILD
- UNDER THE SEA • OCEANOSAURES 3D
- DRAGONS 3D



NEW



## NORMANDY 1944

SPRING 2014

> **To mark the 70th anniversary of D-Day**, Normandy 1944 gives viewers the chance to relive the key moments of the D-day landings, and particularly the less well-known aspects of Operation Overlord, such as the strategic geographical considerations and ingenuity of the preparations that preceded this colossal military operation that changed the world.

## LE PLANETARIUM

> **Great space conquests** and stories of the constellations as told by our scientific presenters. See the big picture of the stars and take part in a galactic adventure into the far reaches of the universe.  
*Spectacular 360° immersive shows and shows with commentary by an astronomy expert..*

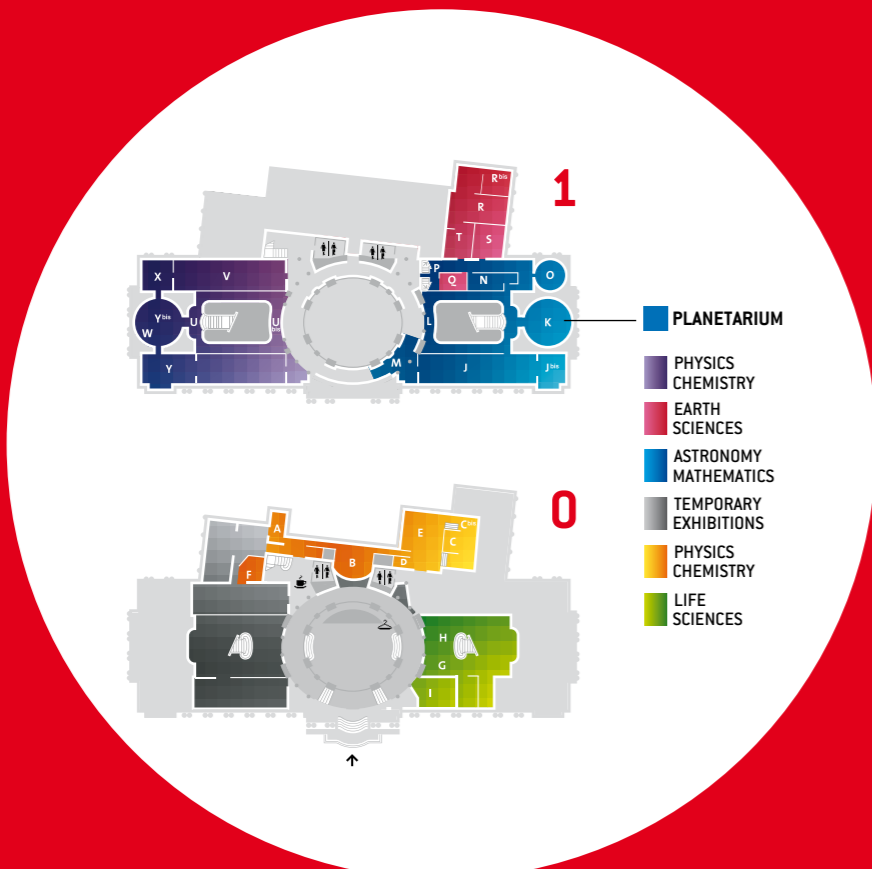
### HIGHLIGHTS

- LOOKING FOR LIFE • SKY NAVIGATOR



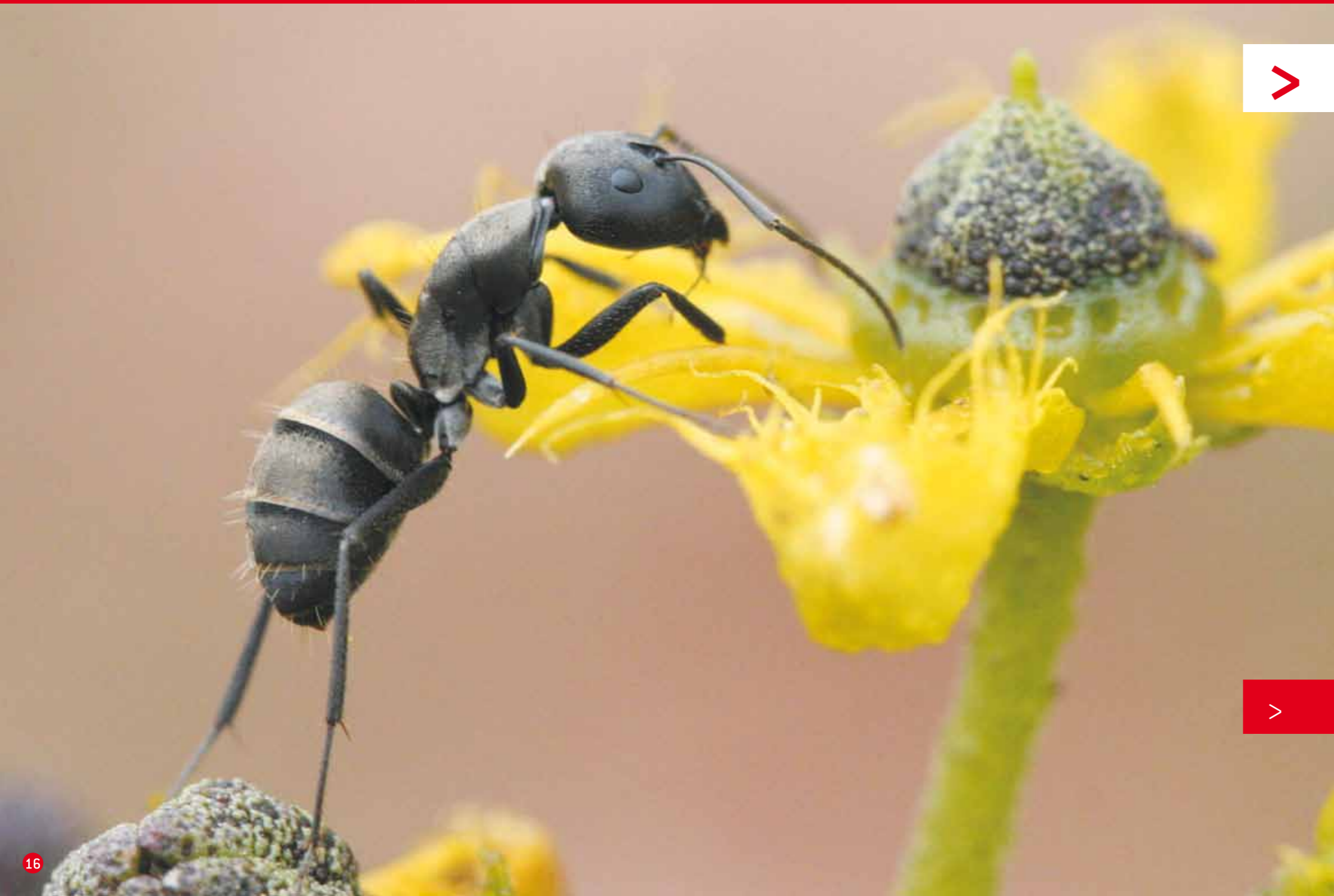
**USEFUL INFO:**  
Admission with Explora ticket + supplement. Age 3 and over. Reservation required. Groups should arrive 10 minutes before the show. Audioguides available in English, Spanish and Italian.

# Welcome to the Palais de la Découverte



**At the Palais de la Découverte,** we're getting down to earth with ants! They live in our gardens, but do we really know who they are? They exist all around the world and have very specific characteristics according to each region. This season, we will be looking at radioactivity, earthquakes and volcanoes in addition to the themes discussed in our permanent exhibitions and presentations. Whether you're young or old, visiting alone or with family, the Palais de la Découverte makes science interesting, accessible and fun for all!





# A THOUSAND BILLION ANTS

15 OCTOBER 2013 TO 24 AUGUST 2014

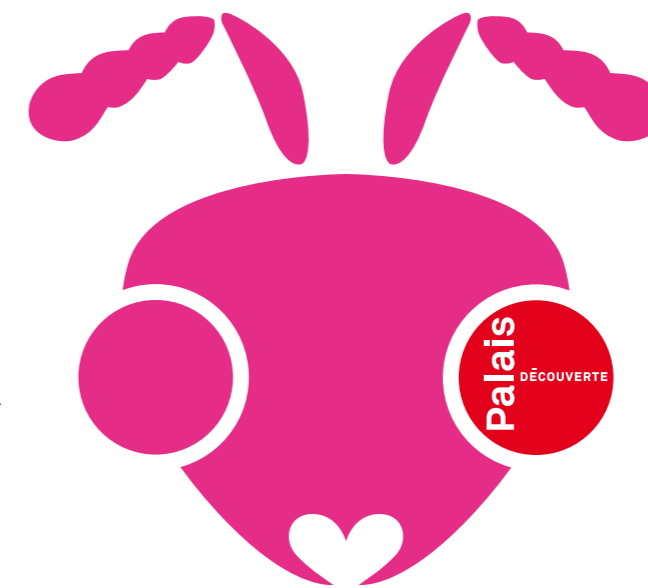
> **There are estimated** one million billion ants and approximately 15,000 species. They can vary from a few millimetres to up to 3 cm in size and can be red, black or brown. They communicate, kiss and have a highly developed social system. Who are they really? This exhibition presents the complexity of this familiar insect in a fascinating way. A dramatic and surprising décor of wild grass plunges visitors into a world where they are reduced to the size of an ant. They will discover several living ant farms, giant portraits and a giant 4m x 4m model. It's strange to feel so small!

*Presented in English and Italian.*

## HIGHLIGHTS

- THE GIANT PORTRAITS
- THE 4M BY 4M MODEL
- THE WORLD'S LARGEST ANTS
- ANTS FITTED WITH RFID CHIPS

MUST SEE



## LIFE SCIENCE

> **Get to know genetics** through a look at cloning, genomes and heredity. We also look more closely at sleep, observe the brain and measure the extraordinary communication skills possessed by animals.

MUST SEE

- TREATING DISEASES WITH STEM CELLS
- IMAGES OF THE BRAIN



PRESENTATION

## THE ANIMAL COMMUNICATION ROOM

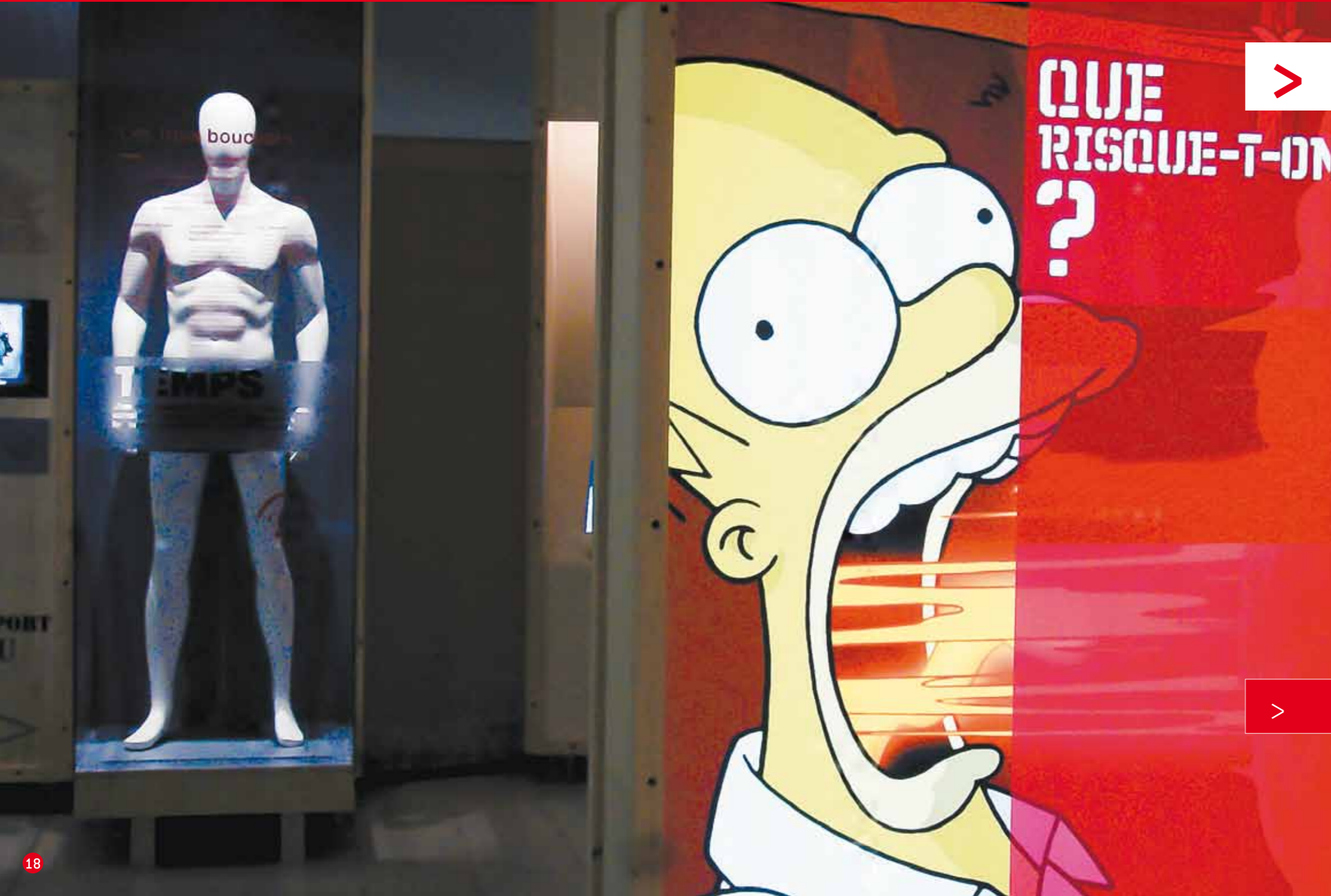
> **Here, fish are trendy,** rats demonstrate their keen intelligence, spiders work together to kill their prey, frogs sit down together to eat and octopuses... well what do octopuses do exactly?

HIGHLIGHTS

- CLEVER RATS
- HUNGRY FROGS
- TACTILE COMMUNICATION AMONG SPIDERS

USEFUL INFO:

The area focusing on animal communication reveals how each of the species presented has a different way of communicating with others – visual, sound, touch, electrical, even chemical... Presentations time: 50 min. [in French only]. Booking required.



# RADIOACTIVITY: FROM HOMER TO OPPENHEIMER

3 DECEMBER 2013 TO 8 JUNE 2014

> **Characters such as the Hulk, Homer or Spiderman** make radioactivity a fascinating topic! With history, techniques, atoms, medical use and even amusing anecdotes, all the aspects of this phenomenon are presented in a simple and fun way. *Age 10 and over Presented in English.*  
Exhibition produced by ANDRA, the French National Radioactive Waste Management Agency.



## MUSIC4KIDS

1 JULY 2014 TO 2 NOVEMBER 2014

> **27 classical, traditional or electronic** musical instruments are available to introduce children to music. It's a chance for everyone to let their imagination run wild and improvise. *Presented in English.*

## HIGHLIGHTS

- THE "BECQUELMETER"
- HOW YOU RADIATE
- THE ROARING YEARS OF THE RADIUM
- X-RAYS MISSION



## PHYSICS

Electrostatics, optics and mechanics. Do these words scare you? These workshops will prove that there's nothing to be afraid of.



## CHEMISTRY

Astonishing chemistry offers some surprising reactions. Flavours, smells, plastic, air... it's all chemistry!



## ASTRONOMY

The Babylonians laid the early foundations of astronomy. Where have we got to now?

## MATHEMATICS

3 rooms where you can journey at your own pace into mathematics.



## EARTH SCIENCE

What do rocks, dinosaurs and water have in common? Geoscience of course!

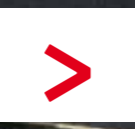
## EARTHQUAKES AND VOLCANOES



FROM 17 DECEMBER 2013

> **Telluric forces** are without doubt the strongest forces on Earth. Their power and unpredictability make for natural events that are both formidable and fascinating. Experiments and multimedia displays offer explanations about volcanoes, tsunamis and earthquakes - phenomena that remind us that our planet is alive. *Age 8 and over*

**USEFUL INFO:**  
Most of the permanent exhibitions are presented in French only.



# THE PLANETARIUM

> **Where is the Great Bear?** What's the story behind Cassiopeia? Why is the Morning Star the sailor's friend? An initiation into star gazing that will leave everyone wanting to know more. The Planetarium goes one step further and can also reproduce the night sky from any period in the past or future - from Ancient Egypt to 14,000 years from now, revealing the night in all its splendour.

**USEFUL INFO:**  
Admission with Palais de la découverte ticket + supplement.  
Sessions last 45 min. Groups should arrive 10 minutes before the show. Age 6 and over. Reservation required



# PLANET ROOM

> **Giant models** of planets and a tactile spherical screen developed by NASA for understanding the Solar System. Hear the story of the birth, life and death of our neighbours, from Mercury to Neptune...



DON'T MISS IT

## 60 PRESENTATIONS A DAY

on astronomy, physics, chemistry, mathematics and life and earth science to give everyone a taste for science and help them enjoy discovering these sometimes complicated ideas. The scientific presenters who help participants to discover science are at the top of their game and help everyone to understand absolutely anything.



## EUREKA

Around 50 experiments to understand how forces, memory and optics work. Sound complicated? Not with our presenters who help all our visitors with their discoveries.



**USEFUL INFO:**  
Presentations given in French for groups of 35 persons maximum. Booking required.



# RATES

## PALAIS DE LA DÉCOUVERTE

GROUP INFORMATION AND RESERVATION:  
TEL.: +33(0)1 56 43 20 25  
FAX: +33(0)1 56 43 20 29  
groupes.palais@universcience.fr

TICKETS	STANDARD ADMISSION	ADULT AND MIXED GROUPS	SCHOOL GROUPS	
			Low season from 01/09/13 to 31/01/14	High season from 01/02/14 to 31/08/14
Exhibitions	€8	€5,50	€3,50	€4,50
Planetarium (as supplement to exhibitions) <sup>(1)</sup>	€3	€2,70	€2,50	€2,50

Prices stated are per person, applicable from 1 September 2013 to 31 August 2014, and subject to change.  
<sup>(1)</sup> Planetarium: age 6 and over.

> Pay by cheque, credit/debit card, cash or bank transfer.

### BLOCK TICKETING (MINIMUM 20 TICKETS)

> Reduced rate from 20 exhibition entry tickets.  
> Open ticket for a visit on the day of the visitor's choice.  
> Information and booking from Cité des Sciences group booking service  
tel.: +33(0)1 40 05 12 12 fax: +33(0)1 40 05 81 90 - resagroupescite@universcience.fr

CONTACT OUR RESERVATION SERVICE for info or to order tickets:  
TEL.: +33 (0) 1 40 05 12 12 - FAX +33 (0) 1 40 05 81 90  
resagroupescite@universcience.fr

## CITÉ DES SCIENCES ET DE L'INDUSTRIE

RESERVATION  
TEL.: +33(0)1 40 05 12 12  
FAX: +33(0)1 40 05 81 90  
resagroupescite@universcience.fr

### TICKETS IN FIXED DATES

	STANDARD ADMISSION	ADULT AND MIXED GROUPS	SCHOOL GROUPS	
			Low season from 01/09/13 to 31/01/14	High season from 01/02/14 to 31/08/14
Video Games: The Exhibition (including Explora exhibitions) <sup>(1)</sup>	€11	€8,50	€4,50	€5,50
Robotic Art (including Explora exhibitions)	€11	€8,50	€4,50	€5,50
Explora exhibitions (except where supplement is due)	€8	€5,50	€3,50	€4,50
Planetarium (as supplement to Explora exhibitions, Video Games or Robotic Art)	€3	€2,70	€2	€2
Géode (giant screen and 3D cinema) <sup>(2)</sup>	€12	€7,50*	€5	€6
Shadows and light exhibition	€8	€5,50	€3,50	€4,50
Cité des Enfants for 2-7 year-olds	€8	€5,50	€3,50	€4,50
Cité des Enfants for 5-12 year-olds	€8	€5,50	€3,50	€4,50
Argonaute submarine	€3	€2,70	€2	€2

Prices stated are per persons, applicable from 1 September 2013 to 31 August 2014, and subject to change.  
<sup>(1)</sup> Video games: The Exhibition until 24 August 2014.  
<sup>(2)</sup> Géode: for 3D film, a €1.50 supplement, for individuals only. Admission €9 between 2:30 pm and 5:30 pm during week-end, school holidays and public holidays.

### BLOCK TICKETING (MINIMUM 20 TICKETS)

> Special rates apply for 20 or more tickets purchase for Explora exhibitions, Robotic Art, Video Games: The Exhibition, Argonaute submarine and the Cité des Enfants.  
> Tickets are open, for a visit at any time, any day.

INTERNATIONAL TOURISM CONTACT:  
TEL.: +33(0)1 40 05 81 41  
promo-tourismeinternational@universcience.fr

GROUPS  
MINIMUM  
10 PERSONS

SCHOOL GROUPS  
1 free admission  
for 15 paying  
ADULT AND  
MIXED GROUPS  
1 free admission  
for 25 paying

# GUIDED TOURS

## PALAIS DE LA DÉCOUVERTE

DISCOVERY TOUR (90 MIN. GUIDED TOUR + FREE TIME TO EXPLORE)	STANDARD ADMISSION	TOUR OPERATOR RATE
Palais de la Découverte discovery tour + free time to explore A thousand billion ants exhibition	€13,90	€11,80

## CITÉ DES SCIENCES ET DE L'INDUSTRIE

DISCOVERY TOUR (90 MIN. GUIDED TOUR + FREE TIME TO EXPLORE)	STANDARD ADMISSION	TOUR OPERATOR RATE
Cité des Sciences discovery tour + free time to explore Explora exhibitions (Admission to Video Games or Robotic Art: + €3 per person)	€13,90	€11,80
VOICE WORKSHOP TOUR (45 MIN. WORKSHOP PRESENTED IN FRENCH)	STANDARD ADMISSION	TOUR OPERATOR RATE
Voice workshop + free time to explore Voice exhibition	13,90 €	11,80 €

Prices stated are per person, applicable from 1 September 2013 to 31 August 2014, and subject to change.

### AVAILABLE WITH ANY TOUR

> Planetarium show: + €3      > lunch: from €35  
> Géode film: + €8              > Boat trip through old Paris + lunch: from €45

DISCOVERY TOURS • One guide for 35 persons • Foreign languages available: English, German, Spanish, Italian, Russian.

RESERVATION  
TEL.: +33(0)1 42 46 92 02 FAX: +33(0)1 42 46 92 09 Monday to Friday from 9:30 am to 6:30 pm  
visite@cultural.fr - www.cultural.fr

ADULT GROUPS  
FROM 20 PERSONS  
1 free admission  
for 25 paying

# CITÉ PACKAGE VISITS FOR ALL

Suggestions of visits based on duration:  
half-or full-day visits for all your customers

LOW SEASON RATE (LS): from 01/09/2013 to 31/01/2014  
HIGH SEASON RATE (HS): from 01/02/2014 to 31/08/2014  
Rates shown are net per participant and applicable from 01/09/2013 to 31/08/2014

### HALF-DAY PACKAGE VISITS

Explora exhibitions + film at the Géode

Individuals: €20 • Adult and mixed groups: €13      School groups: LS €8,50/HS €10,50

Explora exhibitions + show at the Planetarium

Individuals: €11 • Adult and mixed groups: €8,20      School groups: LS €5,50/HS €6,50

Video Games: The Exhibition + film at the Géode

Individuals: €23 • Adult and mixed groups: €16      School groups: LS €9,50/HS €11,50

### FULL-DAY PACKAGE VISITS

Explora exhibitions + film at the Géode + show at the Planetarium

Individuals: €23 • Adult and mixed groups: €15,70      School groups: LS €10,50/HS €12,50

Explora exhibitions + show at the Planetarium + visit to the Argonaute submarine

Individuals: €14 • Adult and mixed groups: €10,90      School groups: LS €7,50/HS €8,50

Video Games: The Exhibition + film at the Géode + show at the Planetarium

Individuals: €26 • Adult and mixed groups: €18,70      School groups: LS €11,50/HS €13,50

RESERVATION  
TEL.: +33(0)1 40 05 12 12 FAX: +33(0)1 40 05 81 90  
resagroupescite@universcience.fr

PLUS FOR  
GROUPS

SCHOOL GROUPS  
1 free admission  
for 15 paying  
ADULT AND MIXED  
GROUPS  
1 free admission  
for 25 paying



Avenue Franklin-Roosevelt - 75008 Paris  
 Tuesday to Saturday from 9:30 am to 6 pm. Sunday  
 and Public Holidays from 10 am to 7 pm. Closed  
 Mondays, 25 December 2013, 1st January, 1st May  
 14 and 27 July 2014. Special opening on Mondays  
 28 October and 30 December 2013.  
[palais-decouverte.fr](http://palais-decouverte.fr)

**M** 13 **9** **1** Champs-Élysées Clemenceau or Franklin Roosevelt  
**RER** **C** Invalides **BUS** 28, 42, 52, 63, 72, 73, 80, 83, 93

### Reception

- Free cloakroom

### Coach Park

- Drop-off point on Av. Franklin.D-Roosevelt, parking possible on Cours la Reine
- Coach drivers receive a free ticket to the exhibitions

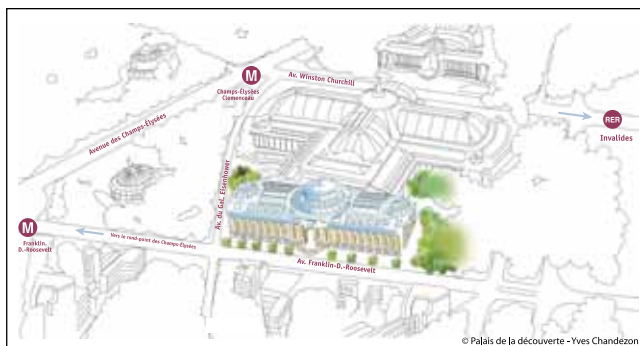
### Cafeteria (inside exhibition area)

Drinks, sandwiches, salads, warm tarts, pastries.

**Shop** Photo books, exhibition catalogues, games, souvenirs, etc.

### Disabled visitors

- Disabled visitors and one helper are admitted free to all exhibition areas
- Wheelchairs are provided free [Cité cloakroom, level 0; Palais Security office]
- Our accessibility staff will help arrange a visit: + 33(0)1 40 05 75 19 (Cite des Sciences) - [patrick.thiebaut@universcience.fr](mailto:patrick.thiebaut@universcience.fr) (Palais de la Découverte)



30 avenue Corentin-Cariou - 75019 Paris  
 Tuesday to Saturday 10 am to 6 pm. Sunday 10 am to 7 pm.  
 Closed Mondays. Special opening on Monday 30 December.  
 Video Games exhibition: late night opening (until 9 pm) on 24, 25, 26, 31 October,  
 1 and 2 November, 26, 27, 28 December and 2, 3, 4 January 2014.  
[cite-sciences.fr](http://cite-sciences.fr)



**M** **7** Porte de la Villette  
**BUS** 139, 150, 152 **T** Tram T3b

Ring road (périphérique nord) exit Porte de la Villette.

### Reception

- Reception groups (level 0, from 9:30 am to 5:30 pm)
- Free cloakroom

### Coach Park

- Entrance on Boulevard Macdonald
- Fixed rates: €10 for 60 min., €40 for 4 hours, €60 for 1 day
- Coach drivers receive a free ticket to the exhibitions
- Reservation and info: +33(0) 1 40 05 70 90

### Restaurants

- Biosphère Snack-bar (level 1)
- Atmosphère Café (level 0)
- At home Snack-bar (level -2)
- Le Rest'ô Traditional restaurant (level -2)
- Covered pic nic area with 550 seats.

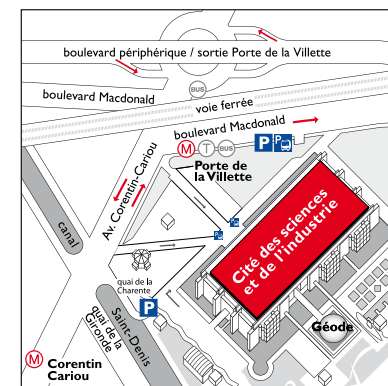
Lunch boxes can be ordered.

Reservation and info: +33(0)1 40 05 79 39

[CSI-contact@groupe-bertrand.com](mailto:CSI-contact@groupe-bertrand.com)

### Parc de la Villette

The Cité adjoins a 33-hectare park, the perfect place for a pause or a picnic in the heart of Paris.



**RESERVATION** Palais de la Découverte : +33(0)1 56 43 20 25 [groupe.palais@universcience.fr](mailto:groupe.palais@universcience.fr) | Cité des Sciences : +33(0)1 40 05 12 12 [resagroupescite@universcience.fr](mailto:resagroupescite@universcience.fr)